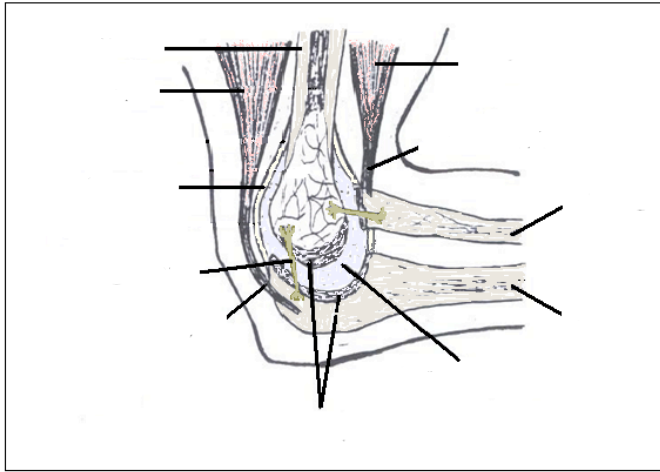
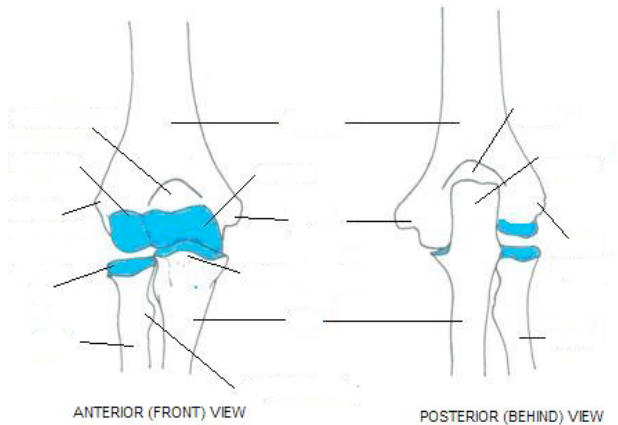


# The Human Elbow Joint

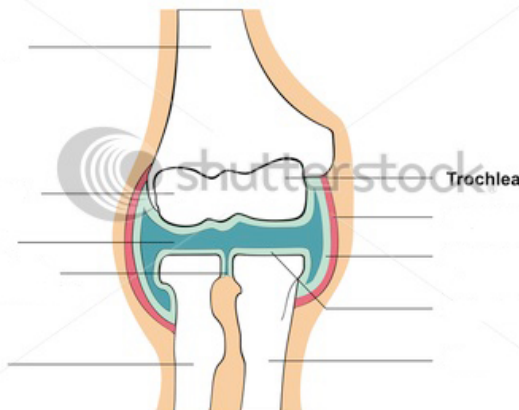
1. Label the following diagrams of the human elbow joints using the associated terms. You also need to list the functions of the structures you've labelled.
  - a. Humerus, tricep, bicep, bicep tendon, radius, ulna, synovial fluid, joint capsule, ligament, tricep tendon, cartilage. Terms will only be used once.



- b. Lateral epicondyle, head of radius, radius, ulna, trochlea, medial epicondyle, humerus. Some terms may be used more than once, some parts with lines have no label.



## ELBOW JOINT



- c. Humerus, synovia, radius, ulna, synovial membrane, articular cartilage.