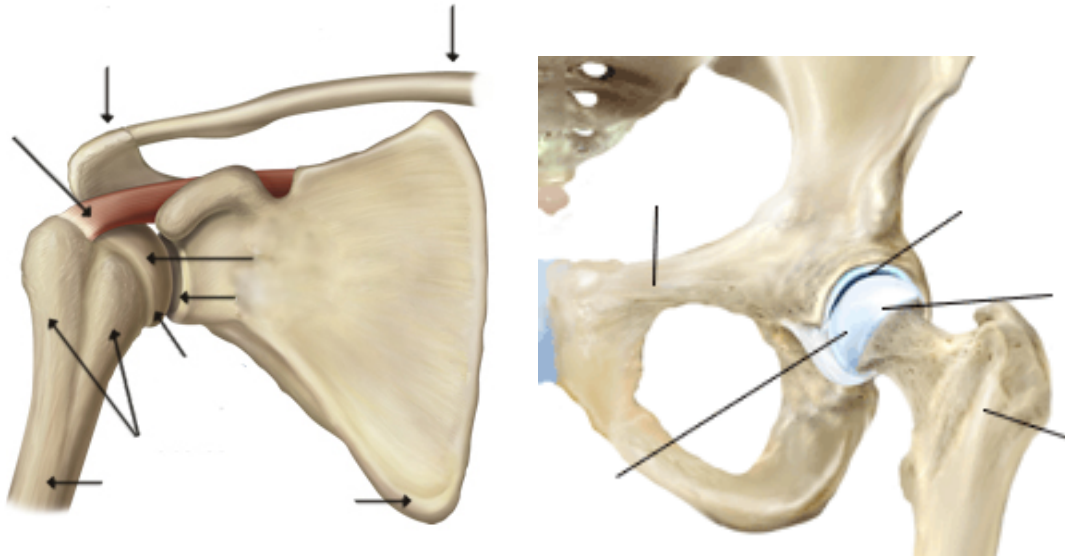


The Hip

1. Identify the similarities between the shoulder joint and the hip joint using the figures below.



2. Label the above diagrams using the following terms: LEFT diagram—rotator cuff, clavicle, acromion, humeral head, glenoid (labrum), cartilage, tuberosities, humerus, scapula; RIGHT diagram—ball, socket, pelvis, cartilage, femur.
3. Which type of joint are the hip and shoulder considered?