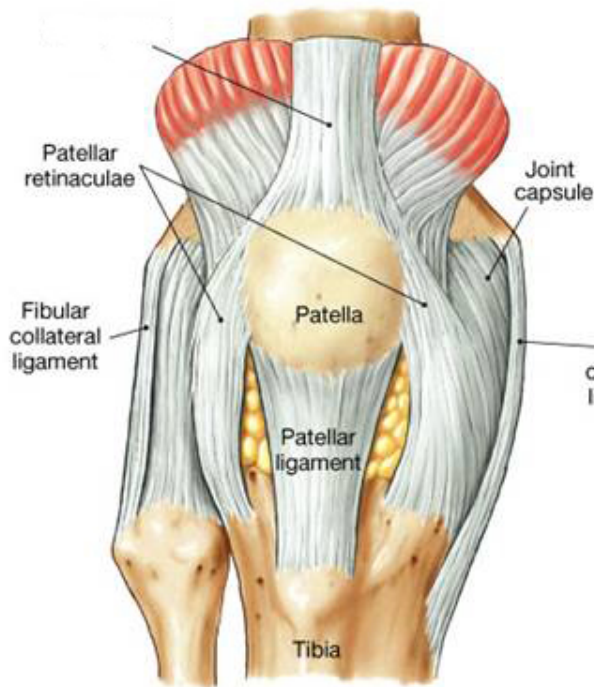
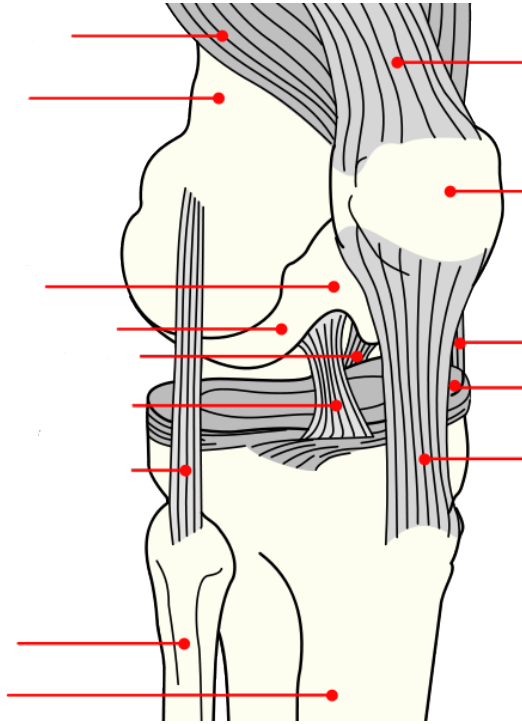
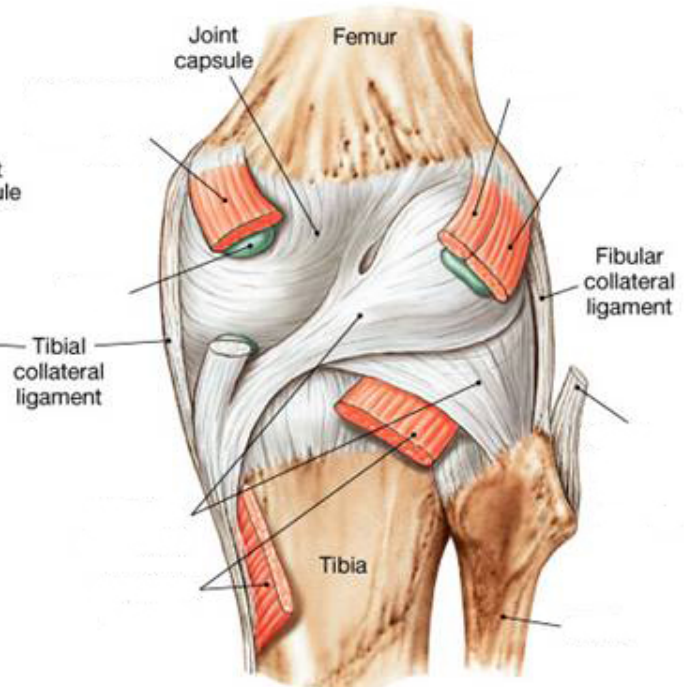


The Human Knee

1. Label the following drawing using the following terms: quadriceps muscle, quadriceps tendon, femur, patella, medial collateral ligament, meniscus, patellar tendon, ACL (anterior cruciate ligament), lateral collateral ligament, fibula, tibia.



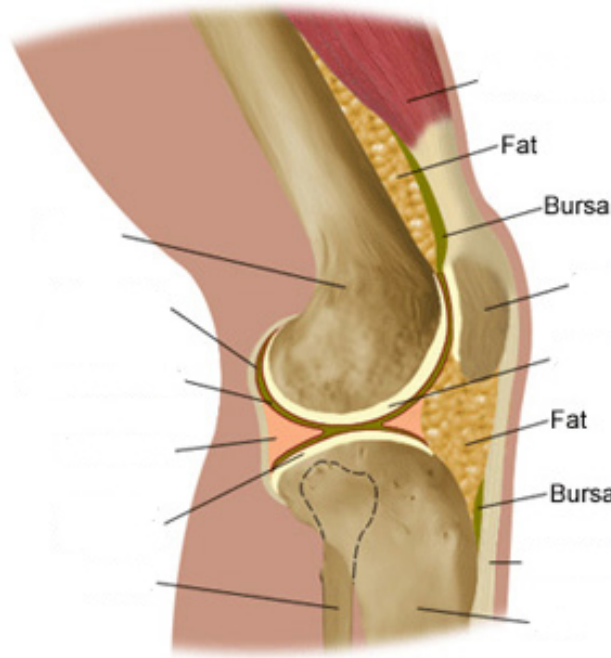
(a) Anterior view, superficial layer



(b) Posterior view, superficial layer

2. Identify the medial and lateral sides of the above diagrams.
3. Label the above diagram with the following terms: quadriceps tendon, medial head of the gastrocnemius muscle, plantaris muscle, lateral head of the gastrocnemius muscle, cut tendon of the biceps femoris muscle, fibula, bursa, popliteal muscle, popliteus muscle.
4. What is another term for the fibular collateral ligament? The tibial collateral ligament?
5. Which bone is commonly known as the knee cap?

Anatomy of the Knee



6. Label the above diagram with the following terms: quadriceps muscle, femur, synovial membrane, patella, meniscus, articular cartilage (twice), synovial fluid, fibula, tibia, patellar membrane.
7. Draw an arrow pointing to where the biceps femoris (hamstring) would be located? Onto which bone(s) would this muscle attach (draw an arrow)?
8. Which type of joint is your knee?